



# Installation Technique for XLPE Cable

June 28th, 2007

Y.Nishiyama

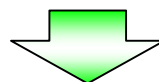
**Chubu Electric Power Co.,Inc.**

# Why Long Cables are Useful?

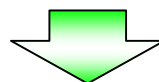
Cable joints are needed to connect cables with adequate interval.

Many joints

Many procedures of jointing	Cost
Disturbing the traffic for a long time	Public Safety
Troubles might occur at joints	Reliability



Reduction the number of joints

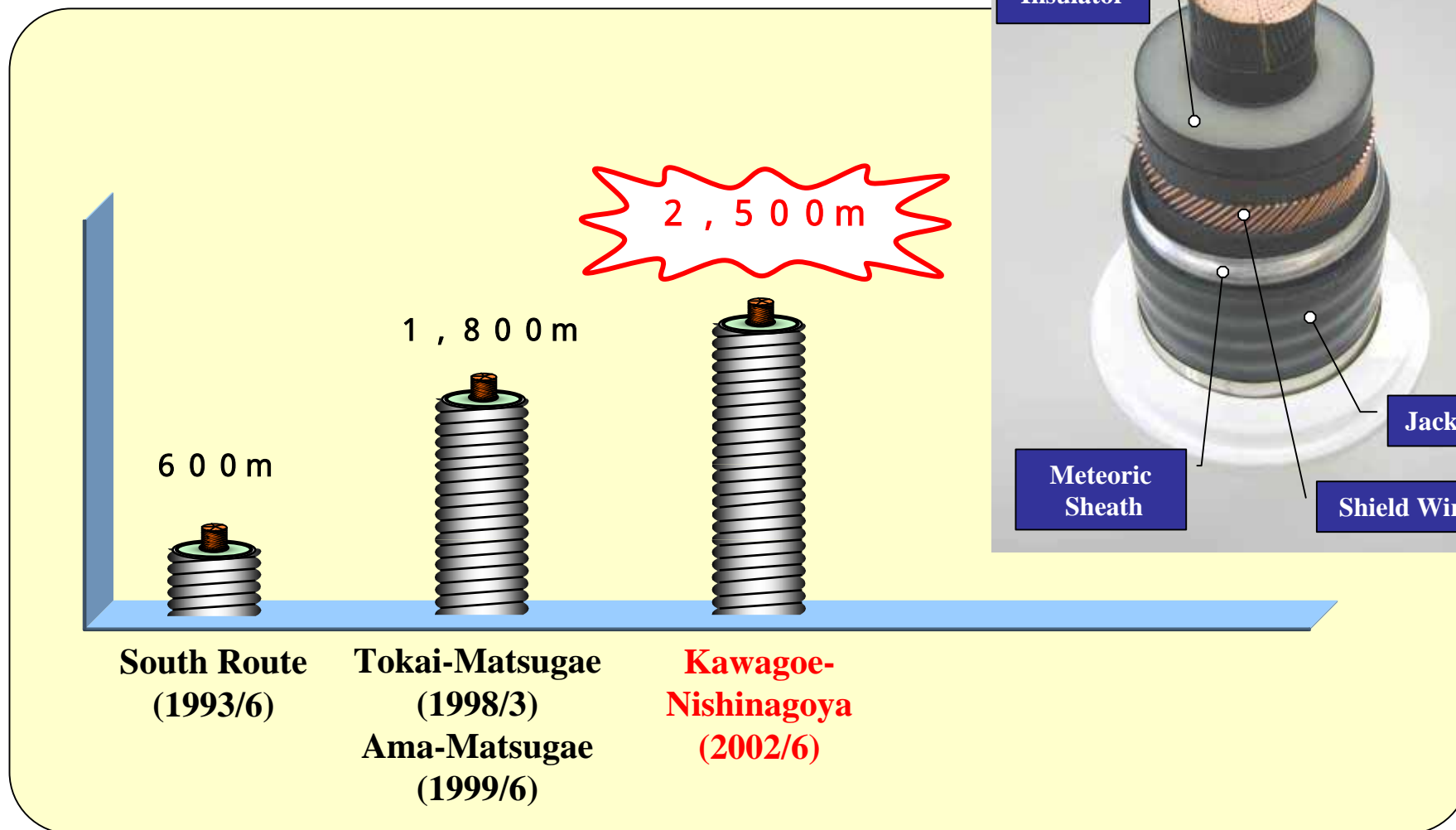


Extend the cable length

Make much effort to extend the cable length

# Length of the cable ( per 1 span )

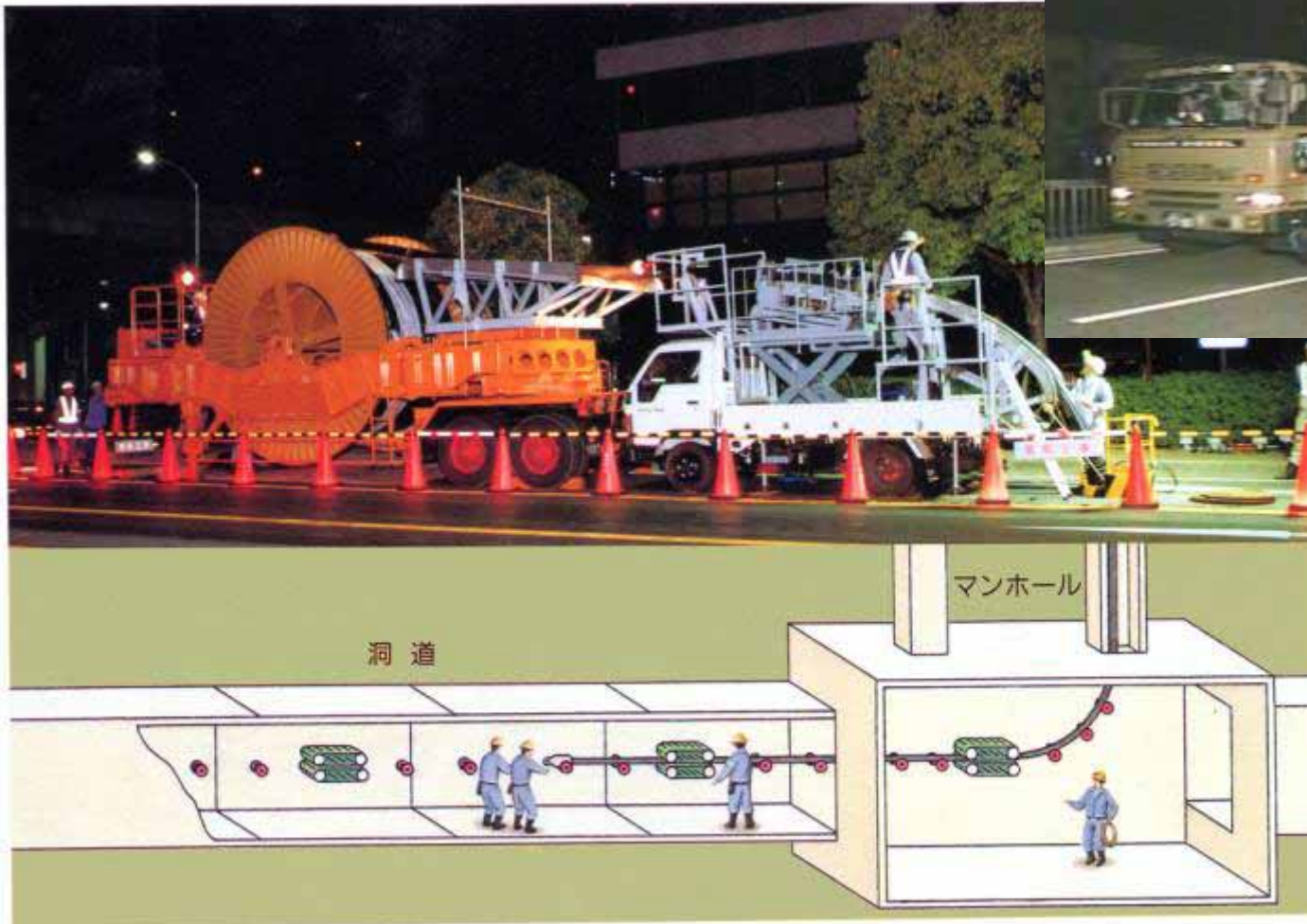
275kV XLPE Cable (2,500 mm<sup>2</sup>) in CEPCO



# South Route (Max Length 600m)

27km  
2circuits

Cable Installation site





# Tokai-Matsugae Line (Max Length 1800m)

19km

1circuits

Discharging Cable



Cable Installation site



Transporting Cable



Motor rollers



# Ama-Matsugae Line (Max Length 1800m)

23km  
2circuits

Least clearance Bridge



Installation site on the ship





# Kawagoe-Nishinagoya Line (Max Length 2500m)

Transporting Cable



Turntable



14km  
2circuits

Cable Installation site

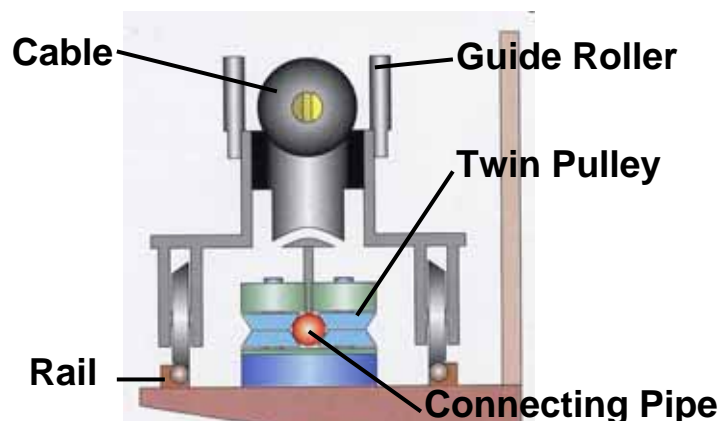


# 500kV XLPE Cable (2,500 mm<sup>2</sup>) in TEPCO

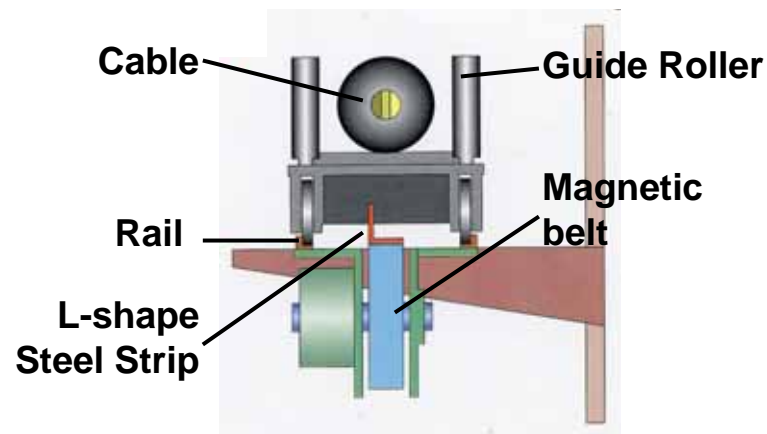
Shin-Keiyo-Toyosu Line (Max Length 1800m)

40km  
2circuits

Career system for cable transfer in tunnel



Twin pulley system



Magnetic belt system

Traverse Cable Pay-Out Method

